

Fall 2007 Utilization of Instructional Space

Texas State University-San Marcos
February 1, 2008

A member of the Texas State University System

OVERVIEW	3
Graph 1: Instructional Space Net Assignable Square Feet by Type of Facility.....	3
EXECUTIVE SUMMARY	5
Table 1: On-campus Instructional Hours and Sections, Fall 2007 and Fall 2006.....	5
Table 2: Campus Wide Classroom Utilization (1999-2007)	6
Table 3: Campus Wide Class Lab Utilization (1999-2007).....	6
Graph 2: Fall 2007 Student Station Occupancy Rates by Course Start Time.....	7
UTILIZATION OF PRIMARY TEACHING FACILITIES AND STUDENT STATION OCCUPANCY	8
Table 4: Classroom Utilization Rate and Student Station Occupancy by Building and Room	10
Table 4A: Classroom Utilization by College, at RRHEC and Teaching Theatres	14
Table 4B: Classroom Utilization by Building.....	14
Table 5: Class Lab Utilization Rates and Student Station Occupancy by Building and Room.....	15
Table 5A: Class Lab Utilization by College	17
Table 5B: Class Lab Utilization by Building	17
Table 6: Teaching Theatre Schedules	18
UNIFORM START TIME POLICY AND UTILIZATION OF CLASSROOMS BY HOUR AND DAY	19
Table 7: Percent of Classrooms in Use by Day and Hour	20
Graph 3: % of Classrooms Occupied for All Days of the Week	22
Graph 4: Classrooms In Use on Monday.....	23
Graph 5: Classrooms In Use on Tuesday.....	23
Graph 6: Classrooms In Use on Wednesday.....	23
Graph 7: Classrooms In Use on Thursday	24
Graph 8: Classrooms In Use on Friday	24
Table 8: Percent of Course Sections on Fridays, At or Before 8:00 AM or At or After 3:30 PM.....	25

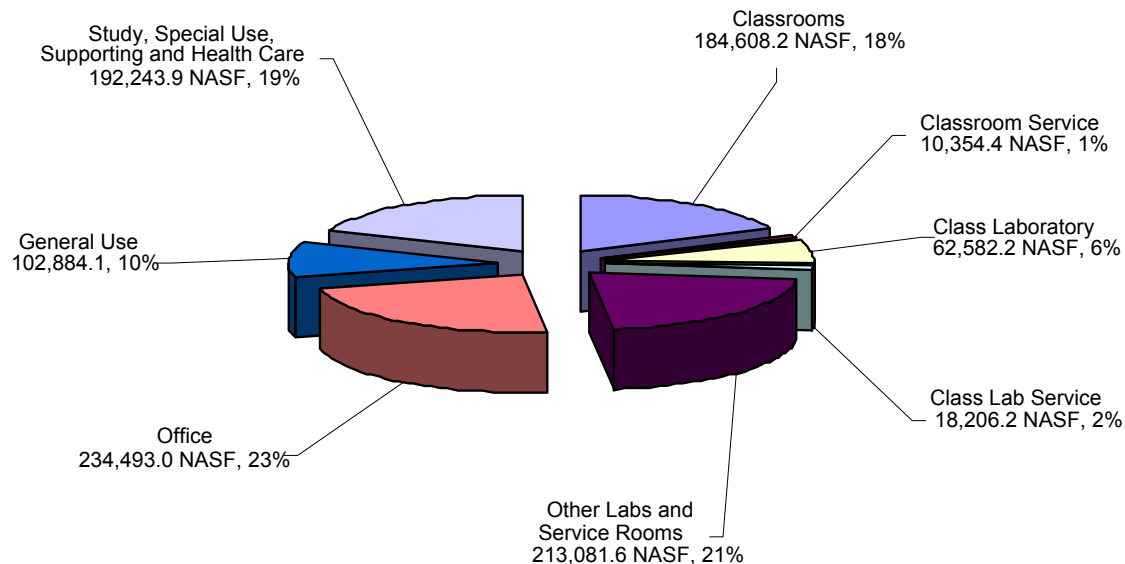
UTILIZATION OF CLASSROOMS AT THE ROUND ROCK HIGHER EDUCATION CENTER (RRHEC)	27
Table 9: Avery Building Classroom Utilization and Student Station Occupancy	27
CLASSROOM COURSE DISTRIBUTION BY SEATING CAPACITY	28
Table 10: Distribution of Course Sections, Average Contact Hours and Student Station Occupancy by Classroom Seating Capacity	28
USE OF ROOMS NOT CODED AS CLASSROOMS AND CLASS LABS	29
Table 11: Utilization of Rooms Not Coded as Classrooms and Class Labs.....	29
CONCLUSIONS	30
Table 12: Fall 2007 State-Wide Classroom Utilization Rankings (Top 20)	30
Table 13: Fall 2007 State-Wide Class Lab Utilization Rankings (Top 20).....	31
Recommendations	31
APPENDIX	33
Process	33
Table 14: Room Utilization Example	34

OVERVIEW

The fall 2007 Utilization of Instructional Space report examines the scheduled use of the primary teaching facilities at Texas State University-San Marcos. Analyzing a room's utilization rate will help determine if it's being scheduled for classes or labs to its maximum potential from a time management viewpoint. Using methodology established by the Texas Higher Education Coordinating Board (THECB), weekly teaching hours are totaled for each specifically designated classroom and class lab identified in the university's facilities inventory and compared to the weekly standard defined by the Coordinating Board. In addition, Student Station Occupancy rates are calculated for these rooms to help determine if a room is being used to its maximum potential from a seating capacity perspective. This report provides a room by room investigation of the course section data used by the THECB to ascertain Texas State's overall utilization rates.

The main focus of this report is the scheduling of classrooms and class labs as reported in the official Schedule of Classes published by the Registrar's Office. Classrooms and class labs represent a significant portion of square feet specifically classified as "instructional." Texas State has a total of 2,893,416.2 net assignable square feet (NASF) of which 1,018,453.6 is classified as instructional. Classrooms and class labs (232 rooms) comprise nearly one-fourth of the instructional NASF (247,190.4 of 1,018,453.6 NASF). While other types of space, such as academic support (library), student services and research are also highly utilized, in this report, their use is not examined in detail because these rooms are not scheduled in the same manner as classrooms and class labs. Graph 1 reflects a breakdown of instructional space at Texas State.

Graph 1: Instructional Space Net Assignable Square Feet by Type of Facility



For this analysis, utilization refers to the number of hours scheduled per week in designated classrooms and class labs. The Texas Higher Education Coordinating Board's standards are:

- 38 hours of scheduled instruction per week for classrooms
- 25 hours of scheduled instruction per week for class labs

Texas State has 173 designated classrooms (152 on main campus and 21 at Round Rock) and 58.45 designated class labs (all on main campus) on record for fall 2007. The Avery Building at the Round Rock Higher Education Center (RRHEC) is currently considered as being part of main campus by the Coordinating Board and those classrooms are factored into the university's utilization rate; however, in light of their limited usage to date, information in this report is reflected with RRHEC included and not included. This is done to more accurately reflect the conditions on main campus.

The data used to calculate utilization rates are obtained from the university's CBM005-Building and Room Report and CBM011-Room Record Report for fall 2007. Only course sections assigned to a specific room for a definite day(s) and time of the week are included in the CBM005. Scheduled hours are removed from the utilization calculations if the lecture or lab section is offered in a room that is not specifically designated as a classroom or class lab (e.g., conference rooms, meeting rooms, assembly rooms, athletic/PE facilities, etc.). Scheduled hours are also removed for "stacked" classes (those that meet on the same day, at the same time, in the same room but have different course and/or section numbers). The process used by Texas State to calculate utilization is explained in detail in the section of the appendix entitled "Process." (p. 33)

Course enrollment data used to calculate Student Station Occupancy (SSO) is obtained from the CBM004-Class Report which includes only Coordinating Board approved courses for resident credit, whether the class is on-campus or off-campus. Students who withdraw on or before the 12th day are not included. The process used to calculate SSO is explained in the Executive Summary. (p. 5)

EXECUTIVE SUMMARY

Scheduled Hours- In total, 4265 Coordinating Board approved course sections were scheduled by Texas State during the fall 2007 semester (CBM004 - Class Report). However, the following table only shows 3745 course sections listed in the CBM005-Building and Room Report (on-campus classes assigned to specific room for definite day(s) and time). There were 207 sections scheduled on-campus that were not assigned a room, day and time and therefore omitted from the utilization calculations (examples of these include thesis, dissertations, and directed studies).

As calculated from the CBM005 report, 11,612.5 hours were scheduled in 426 different rooms, in 37 buildings on main campus and at the Avery Building in Round Rock. From this total, 1092.0 stacked hours and 2478.0 hours taught in a room not designated as a classroom or class lab are subtracted, resulting in 8042.5 hours used to calculate room utilization. More specifically, 6136.7 hours were offered in the 173 designated classrooms and 1905.8 hours were offered in the 59 designated class labs for fall 2007.

Table 1: On-campus Instructional Hours and Sections, Fall 2007 and Fall 2006

	Fall 2007 Scheduled Hours	Sections 2007	Fall 2006 Scheduled Hours	Sections 2006	06 to 07 Comparison
Total instructional hours (CBM005 Report)	11,612.5	3745	11,337.2	3621	+275.3 Hours +124 Sections
Stacked hours	1092.0	304	1059.2	273	+32.8 Hours +31 Sections
Taught in rooms not designated as classrooms or class labs	2478.0	840	2080.3	693	+397.8 Hours +147 Sections
Total instructional hours used in this report	8042.5	2601	8197.7	2655	-155.2 Hours -54 Sections
Instructional / contact hours offered in 173 classrooms	6136.7	2005	6012.9	2020	+123.8 Hours -15 Sections
Instructional / contact hours offered in 58.45* class labs	1905.8	596	2184.8	635	-279.0 Hours -39 Sections

* RFM 4234 & RFM 4236 also serve as research labs. The percent of time dedicated to research is deducted.

Table 1 reflects that 124 more sections and 275.3 more hours were scheduled on-campus in fall 2007 as compared to fall 2006. It also reflects that the number of sections scheduled in designated classrooms decreased by 15 but the number of hours increased by 123.8. Both stacked sections and sections taught in other room types (i.e. rooms not classified as a 110-Classroom or 210-Class Lab) increased. Stacked sections rose by 31 sections / 32.8 hours and sections in other room types rose by 147 sections / 397.8 hours. The increase in the "other room types" was partially caused by changes to the facilities inventory (see Utilization of Primary Teaching Facilities and Student Station Occupancy p. 8). The utilization rate for classrooms increased 0.9 percent (Table 2 p. 6) from fall 2006 to fall 2007.

Class lab utilization decreased 0.9 percent from fall 2006 to fall 2007 (Table 3 p. 6). The drop is mainly attributed to a net decrease of 7 class labs. All seven of these rooms were reclassified to classrooms for fall 2007.

The average weekly hours of scheduled instruction for classrooms at Texas State for the fall 2007 semester are 35.4 contact hours (93.2% of the Coordinating Board standard for classrooms). Texas State

ranks ninth in the State. Notably only three institutions achieved utilization rates higher than the standard; The University of Texas at San Antonio (43.8 average hours, 142 classrooms), Midwestern State University (40.02 average hours, 76 classrooms) and The University of Texas at Austin (38.05 average hours, 442 classrooms). If the Avery Building in Round Rock is removed from the calculations, Texas State's average for classroom hours would be 38.6 hours (101.5% of the Coordinating Board standard).

The average weekly hours of instruction for class labs at Texas State for the fall 2007 semester are 32.5 hours (130.0% of the Coordinating Board standard for class labs). Texas State is ranked fourth in the State for class lab utilization. Texas A&M International (34.41 average hours, 8 class labs), The University of Texas at Brownsville (32.96 average hours, 31 class labs) and The University of Texas at Austin (32.75 average hours, 148 class labs) rank ahead of Texas State.

Table 2: Campus Wide Classroom Utilization (1999-2007)

Fall Semester	Number of Designated Classrooms	Average (50 Min) Hours Per Classroom	% Of CB Utilization Standard
2007	173	35.4	93.2
2006	173	34.6	91.1
2005	182	35.5	93.4
2004	164	38.4	101.0
2003	170	39.7	104.5
2002	164	41.4	108.9
2001	164	41.7	109.7
2000	166	41.3	108.6
1999	172	38.9	102.4

Table 3: Campus Wide Class Lab Utilization (1999-2007)

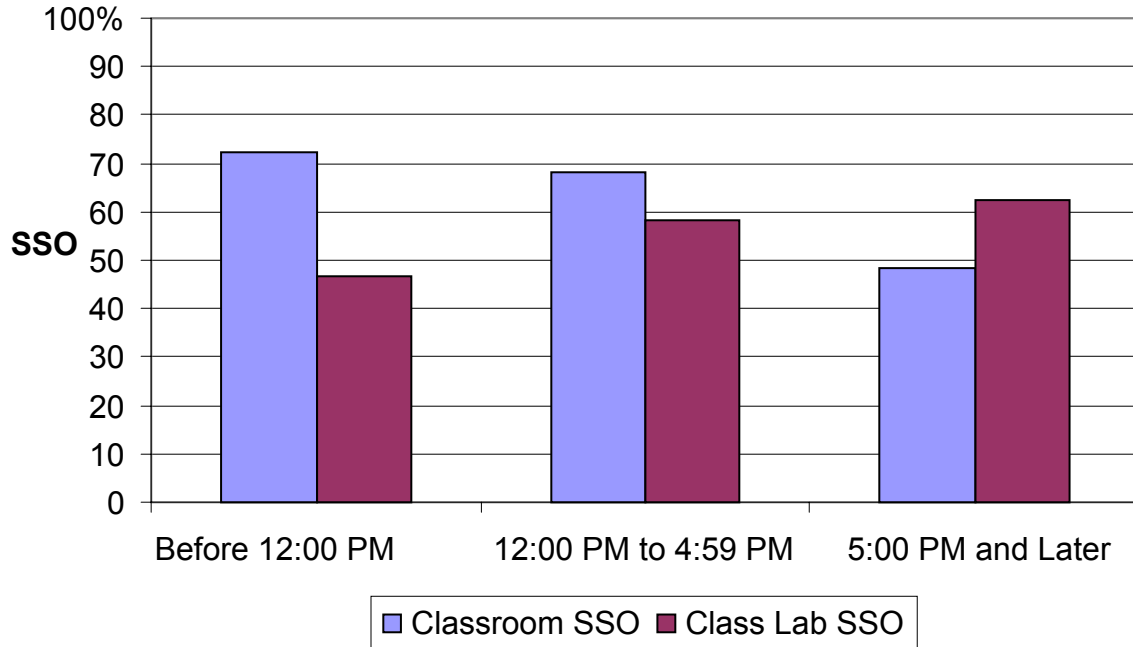
Fall Semester	Number of Designated Class Labs	Average (50 Min) Hours Per Class Lab	% Of CB Utilization Standard
2007	58.45*	32.5	130.0
2006	65.45*	33.5	134.0
2005	57.45*	34.7	138.8
2004	60.45*	30.2	120.8
2003	56	31.76	127.0
2002	64	34.8	139.2
2001	63	34.8	139.2
2000	46	28.0	112.0
1999	47	31.6	126.4

* RFM 4234 & RFM 4236 also serve as research labs. The percent of time dedicated to research is deducted.

Student Station Occupancy - Student Station Occupancy (SSO) is calculated to determine if a room is being used to its maximum potential in terms of seating capacity per course section scheduled. SSO is calculated by dividing the total number of students enrolled for all courses sections scheduled in a specific room by the total number of available seats for all sections in that room. A review of the fall 2007 data indicates a 66.5% student station occupancy rate for classrooms and a 47.8% SSO for Class Labs. A national survey conducted by Paulien & Associates, Inc. in 2003 reported the average SSO percentage is 64% indicating that Texas State has a SSO percentage higher than the national average for classrooms.

Graph 2 illustrates SSO by course start time for the morning, afternoon and evening periods. See Table 10: Distribution of Course Sections, Average Contact Hours and Student Station Occupancy by Classroom Seating Capacity (p. 28) for additional SSO Information.

Graph 2: Fall 2007 Student Station Occupancy Rates by Course Start Time



UTILIZATION OF PRIMARY TEACHING FACILITIES AND STUDENT STATION OCCUPANCY

No distinction is made between lecture or lab sections when calculating utilization. Therefore, 165 lab sections (322 hours) offered in designated classrooms are included in the classroom utilization rate and 379 lecture sections (1208 hours) offered in designated class labs are included in the class lab utilization rate.

A classroom is defined by the Coordinating Board as a room “used for scheduled instruction referred to as lecture rooms, demonstration rooms, seminar rooms, and general-purpose classrooms. Classrooms can be equipped with tablet armchairs, tables and chairs (as in a seminar room), or similar types of seating. They also can be furnished with special equipment, including multimedia or telecommunications equipment, appropriate to a specific area of study if the room is suitable for use by other classes.” There were 173 classrooms in fall 2006. The following changes to the classroom inventory were made for fall 2007 (net result is 173 classrooms).

- Agriculture 204, reclassified to an Assembly Room
- Chemistry 105, reclassified to a Meeting Room
- Chemistry 110, reclassified to a classroom (+)
- Derrick Hall 118, new classroom (+)
- Derrick Hall 121, new classroom (+)
- Emmett and Miriam McCoy Hall 124, reclassified to a Meeting Room
- Emmett and Miriam McCoy Hall 224, reclassified to a Meeting Room
- Emmett and Miriam McCoy Hall 333, reclassified to a classroom (+)
- Evans Liberal Arts 315, reclassified to a classroom (+)
- Family & Consumer Sciences 203, reclassified to a classroom (+)
- Family & Consumer Sciences 205, reclassified to a classroom (+)
- Family & Consumer Sciences 216, reclassified to a classroom (+)
- Freeman Aquatic Biology 102, reclassified to a Meeting Room
- Hines Academic Center 103, reclassified to a Meeting Room
- Jerome & Catherine Supple Science 257-A, reclassified to a Special Class Lab
- Joann Cole Mitte Art 1128, reclassified to a classroom (+)
- Jowers Center A211, reclassified to a classroom (+)
- Lampasas 100, back on-line (under renovation 2006) (+)
- Music 125, reclassified to a Special Class Lab
- Roy F Mitte Technology & Physics 3224, reclassified to a Meeting Room
- Roy F Mitte Technology & Physics 3241, reclassified to a Meeting Room
- Theatre Center 216, reclassified to an Assembly Room

Note: As agreed to by the Vice President for Information Technology, the Department of Instructional Technologies Support will continue to support multimedia in rooms previously coded as first call classrooms.

The classrooms with the highest utilization rates are;

- Health Professions, room 218 (69.3 weekly hours, 182.4% of the Coordinating Board standard, 1st call College of Health Professions).
- Joann Cole Mitte Art, room 4127A (58.8 weekly hours, 154.7% of the Coordinating Board standard, 1st call Art & Design).
- Joann Cole Mitte Art, room 1128 (52.8 weekly hours, 138.9% of the Coordinating Board standard, 1st call Art & Design).

The least used classrooms (other than classrooms at the Avery Building in Round Rock)

- Flowers Hall, room 129 (25.5 weekly hours, 67.1% of the Coordinating Board standard, 1st call English);
- Psychology, room 126 (26.0 weekly hours, 68.4% of the Coordinating Board standard, 1st call Philosophy)
- Emmett & Miriam McCoy Hall, room 119 (26.1 weekly hours, 68.7% of the Coordinating Board standard, 1st call McCoy College of Business Administration).

A class laboratory is defined as a room for “regularly scheduled classes that require special equipment for student participation, experimentation, observation, or practice.” It is designed for and/or furnished with equipment to serve the needs of a particular discipline for group instruction. The room design and/or equipment normally limits its use for other disciplines. There were 65.45 class labs in fall 2006. The following changes were made for fall 2007 (net result is 58.45* class labs). * RFM 4234 & RFM 4236 also serve as research labs. The percent of time dedicated to research is deducted.

- Chemistry 110, reclassified to a Classroom
- Evans Liberal Arts 315, reclassified to a Classroom
- Family and Consumer Sciences 203, reclassified to a Classroom
- Family and Consumer Sciences 205, reclassified to a Classroom
- Family and Consumer Sciences 216, reclassified to a Classroom
- Joann Cole Mitte Art 1128, reclassified to a Classroom
- Jowers Center A211, reclassified to a Classroom

The following tables provide the number of sections (SECT), weekly hours (HRS), utilization rate (UTIL), seating capacity (SEATS), student station occupancy rates (SSO) and 1st call department for each designated classroom (Table 4) and class lab (Table 5) listed in the facilities inventory for fall 2007. Summaries by College (Table 4A & 5A) and Building (Table 4B & 5B) are also provided.

Table 4: Classroom Utilization Rate and Student Station Occupancy by Building and Room

BUILDING	ROOM	SECT	HRS	UTIL	SEATS	SSO	DEPARTMENT
Agriculture	202	10	27	72.1	49	53.3	Department of Agriculture
Alkek Library	250	13	39	102.6	386	81.0	Not Assigned
Avery Building	123	4	13	34.7	35	53.6	RRHEC
Avery Building	124	5	17	43.4	35	46.9	RRHEC
Avery Building	312	3	9.9	26.1	35	54.3	RRHEC
Avery Building	313	3	9.9	26.1	35	61.0	RRHEC
Avery Building	318	5	16	42.6	35	40.6	RRHEC
Avery Building	319	6	23	60.0	35	42.9	RRHEC
Avery Building	357	5	17	44.2	35	52.6	RRHEC
Avery Building	358	4	15	40.3	35	42.9	RRHEC
Avery Building	362	5	17	43.4	35	30.3	RRHEC
Avery Building	363	2	6.6	17.4	35	30.0	RRHEC
Avery Building	403	4	13	34.7	50	41.0	RRHEC
Avery Building	404	3	9.9	26.1	50	45.3	RRHEC
Avery Building	405	4	13	34.7	50	51.0	RRHEC
Avery Building	406	1	3.3	8.7	50	28.0	RRHEC
Avery Building	407	7	19	49.7	50	59.1	RRHEC
Avery Building	408	4	13	33.9	50	57.0	RRHEC
Avery Building	414	3	9.9	26.1	35	53.3	RRHEC
Avery Building	420	2	6.6	17.4	35	54.3	RRHEC
Avery Building	451	4	13	34.7	50	46.5	RRHEC
Avery Building	453	6	17	43.4	50	31.7	RRHEC
Avery Building	454	3	9.9	26.1	35	36.2	RRHEC
Centennial Hall	100	16	45	119.2	37	67.2	Modern Languages
Centennial Hall	101	17	49	127.9	30	82.5	Modern Languages
Centennial Hall	102	20	43	112.1	36	53.2	Department of Communication Studies
Centennial Hall	103	19	40	104.2	39	48.6	Department of Communication Studies
Centennial Hall	106	11	33	86.8	30	82.1	Modern Languages
Centennial Hall	157	19	42	111.3	385	69.5	Not Assigned
Centennial Hall	215	15	45	119.2	36	66.9	Modern Languages
Centennial Hall	217	14	42	111.3	38	67.9	Modern Languages
Centennial Hall	218	13	39	103.4	30	76.7	Modern Languages
Centennial Hall	318	17	41	108.9	37	52.3	Department of Communication Studies
Centennial Hall	400	16	37	97.9	35	60.5	Department of Communication Studies
Centennial Hall	402	16	34	88.4	37	51.4	Department of Communication Studies
Centennial Hall	410	12	34	88.4	35	68.1	Department of Communication Studies
Centennial Hall	G01	12	36	94.7	106	68.3	Chemistry and Biochemistry
Chemistry	100	14	38	98.7	119	62.4	Chemistry and Biochemistry
Chemistry	110	12	40	104.2	24	70.8	Chemistry and Biochemistry
College of Education	1005	16	49	129.5	49	68.6	Curriculum And Instruction
College of Education	1007	15	46	120.0	107	70.6	Curriculum And Instruction
College of Education	2127	13	44	116.1	48	70.0	Curriculum And Instruction
College of Education	2128	15	44	114.5	47	67.8	Curriculum And Instruction

BUILDING	ROOM	SECT	HRS	UTIL	SEATS	SSO	DEPARTMENT
College of Education	3038	14	40	105.8	41	56.4	Curriculum And Instruction
College of Education	3039	14	43	112.1	34	71.4	Curriculum And Instruction
College of Education	3041	12	32	85.3	39	57.5	Curriculum And Instruction
College of Education	3066	13	38	99.5	40	61.3	Curriculum And Instruction
College of Education	4005	12	36	95.5	34	66.7	Educ Admin & Psych Services
College of Education	4007	14	41	106.6	32	73.7	Educ Admin & Psych Services
College of Education	4008	13	40	104.2	45	52.1	Educ Admin & Psych Services
College of Education	4009	14	39	103.4	35	58.6	Educ Admin & Psych Services
College of Education	4039	14	41	108.2	31	52.5	Educ Admin & Psych Services
Derrick Hall	113	11	33	87.6	169	66.7	Sociology / Computer Science
Derrick Hall	118	14	42	110.5	32	65.0	English
Derrick Hall	121	9	27	71.8	35	70.5	Mathematics
Derrick Hall	227	15	37	98.2	49	76.1	Sociology
Derrick Hall	229	16	43	113.7	40	55.6	Sociology
Derrick Hall	230	33	48	125.0	28	104.1	University College
Derrick Hall	234	15	45	119.2	73	48.2	Sociology
Derrick Hall	237	12	36	95.5	40	83.1	Mathematics
Derrick Hall	238	13	39	103.4	47	73.0	Mathematics
Derrick Hall	239	25	41	107.4	31	95.2	University College
Derrick Hall	241	12	37	97.1	49	46.4	Computer Science
Derrick Hall	326	13	39	103.4	49	77.4	Mathematics
Derrick Hall	327	13	39	102.6	39	72.2	Mathematics
Derrick Hall	328	17	42	111.3	49	59.9	Mathematics
Derrick Hall	329	11	33	86.1	94	75.0	Sociology / Mathematics
Derrick Hall	330	15	42	110.5	49	68.4	Mathematics
Derrick Hall	331	13	39	102.6	49	65.6	Mathematics
Derrick Hall	332	11	33	86.8	49	69.9	Mathematics
Derrick Hall	333	16	44	114.5	49	59.8	Mathematics
Derrick Hall	334	11	29	75.0	49	52.7	Mathematics
Derrick Hall	336	19	46	121.1	49	56.9	Mathematics
Emmett & Miriam McCoy Hall	105	11	31	80.5	48	61.6	McCoy College of Business Administration
Emmett & Miriam McCoy Hall	111	10	31	82.1	58	60.0	McCoy College of Business Administration
Emmett & Miriam McCoy Hall	113	15	43	114.2	58	58.0	McCoy College of Business Administration
Emmett & Miriam McCoy Hall	119	9	26	68.4	250	74.2	McCoy College of Business Administration
Emmett & Miriam McCoy Hall	125	13	40	105.8	60	60.4	McCoy College of Business Administration
Emmett & Miriam McCoy Hall	126	13	40	105.8	98	73.2	McCoy College of Business Administration
Emmett & Miriam McCoy Hall	127	12	36	94.7	98	96.3	McCoy College of Business Administration
Emmett & Miriam McCoy Hall	222	11	33	87.6	42	85.7	McCoy College of Business Administration
Emmett & Miriam McCoy Hall	223	11	33	87.6	42	93.7	McCoy College of Business Administration
Emmett & Miriam McCoy Hall	225	15	46	120.8	42	77.6	McCoy College of Business Administration

BUILDING	ROOM	SECT	HRS	UTIL	SEATS	SSO	DEPARTMENT
Emmett & Miriam McCoy Hall	233	11	32	84.2	140	78.6	McCoy College of Business Administration
Emmett & Miriam McCoy Hall	240	12	37	96.3	55	92.9	McCoy College of Business Administration
Emmett & Miriam McCoy Hall	241	11	33	87.6	55	80.0	McCoy College of Business Administration
Emmett & Miriam McCoy Hall	242	13	39	102.6	94	62.8	McCoy College of Business Administration
Emmett & Miriam McCoy Hall	243	10	30	78.9	88	53.0	McCoy College of Business Administration
Emmett & Miriam McCoy Hall	333	15	43	112.1	36	65.2	CIS & Quantitative Methods
Evans Liberal Arts	114	11	27	71.1	126	70.3	Anthropology / Political Science
Evans Liberal Arts	116	11	33	87.6	129	76.7	Department of Geography
Evans Liberal Arts	118	12	36	95.5	125	87.1	Political Science
Evans Liberal Arts	218	14	43	112.9	77	45.5	Political Science
Evans Liberal Arts	220	15	39	102.6	37	43.4	Anthropology / Political Science
Evans Liberal Arts	222	14	40	105.8	39	67.4	Political Science
Evans Liberal Arts	225	14	44	114.5	83	45.7	Political Science
Evans Liberal Arts	229	16	41	108.9	49	51.0	Anthropology / Political Science
Evans Liberal Arts	283	14	44	116.1	42	61.6	Political Science
Evans Liberal Arts	311	15	40	105.5	69	53.3	Department of Geography
Evans Liberal Arts	312	14	31	80.3	37	48.3	Department of Geography
Evans Liberal Arts	315	14	33	86.8	28	51.0	Department of Geography
Evans Liberal Arts	316	12	36	93.7	70	58.8	Department of Geography
Family & Consumer Sciences	123	15	36	93.7	50	48.1	Department of Family & Consumer Sciences
Family & Consumer Sciences	135	13	39	103.4	83	61.6	Department of Family & Consumer Sciences
Family & Consumer Sciences	158	12	36	94.7	113	55.4	Department of Family & Consumer Sciences
Family & Consumer Sciences	203	7	41	108.4	21	83.0	Department of Family & Consumer Sciences
Family & Consumer Sciences	205	12	40	105.8	24	74.0	Department of Family & Consumer Sciences
Family & Consumer Sciences	216	6	38	101.1	21	71.4	Department of Family & Consumer Sciences
Flowers Hall	111	13	39	103.4	31	66.5	English
Flowers Hall	112	15	45	119.2	25	84.0	English
Flowers Hall	113	14	43	112.1	45	46.8	English
Flowers Hall	129	9	26	67.1	32	76.7	Modern Languages
Flowers Hall	130	12	33	86.8	54	36.4	English
Flowers Hall	224	14	43	112.1	32	68.1	English
Flowers Hall	225	14	39	102.6	26	77.2	English
Flowers Hall	226	13	39	103.4	26	81.7	English
Flowers Hall	227	12	36	95.5	25	80.3	English
Flowers Hall	228	11	33	86.8	27	85.5	English
Flowers Hall	229	13	40	104.2	47	47.0	English
Flowers Hall	252	13	39	103.4	29	71.6	English
Flowers Hall	254	13	39	102.6	28	77.2	English
Flowers Hall	255	12	36	95.5	28	70.5	English
Flowers Hall	256	12	36	95.5	25	83.7	English

BUILDING	ROOM	SECT	HRS	UTIL	SEATS	SSO	DEPARTMENT
Flowers Hall	341	9	27	71.1	191	98.8	English
Flowers Hall	G12	14	42	111.3	31	72.8	English
Health Professions	141	12	36	93.9	37	50.0	College of Health Professions
Health Professions	143	17	48	126.8	56	42.6	College of Health Professions
Health Professions	213	17	37	97.1	49	42.5	College of Health Professions
Health Professions	214	14	44	114.5	49	52.6	College of Health Professions
Health Professions	216	15	43	112.1	33	59.2	College of Health Professions
Health Professions	217	16	50	130.8	33	52.1	College of Health Professions
Health Professions	218	8	69	182.4	27	55.6	College of Health Professions
Health Professions	230	15	40	105.0	69	53.8	College of Health Professions
Health Professions	231	15	37	96.3	77	44.9	College of Health Professions
Health Professions	233	15	34	90.5	40	51.5	College of Health Professions
Hines Academic Center	203	13	40	105.8	60	53.5	Department of Criminal Justice
Hines Academic Center	204	10	30	78.9	131	35.2	Department of Communication Studies
Hines Academic Center	205	11	33	86.8	132	51.0	Department of Criminal Justice
Hines Academic Center	206	11	30	78.9	85	69.8	Department of Criminal Justice
Hines Academic Center	207	10	30	78.9	84	57.3	Department of Criminal Justice
Jerome & Catherine Supple Science	112	14	42	110.5	111	66.1	Physics
Jerome & Catherine Supple Science	116	12	33	86.8	222	46.0	Biology
Joann Cole Mitte Art	1128	8	53	138.9	26	81.3	Art and Design
Joann Cole Mitte Art	2121	12	38	99.5	196	63.4	Art and Design
Joann Cole Mitte Art	4113	7	41	107.4	23	91.9	Art and Design
Joann Cole Mitte Art	1113-A	10	47	123.2	31	74.8	Art and Design
Joann Cole Mitte Art	4127-A	10	59	154.7	32	64.1	Art and Design
Jowers Center	A202	14	42	111.6	67	66.0	Dept of Health, PE & Recreation
Jowers Center	A203	13	35	92.9	50	74.9	Dept of Health, PE & Recreation
Jowers Center	A210	18	45	118.2	49	54.4	Dept of Health, PE & Recreation
Jowers Center	A211	14	39	101.6	73	50.8	Dept of Health, PE & Recreation
Lampasas	100	15	27	71.1	122	19.9	Curriculum And Instruction
LBJ Student Center & Visitor Ctr	4-16.1	11	33	86.8	402	77.5	Not Assigned
Music	214	10	26	68.7	68	57.8	School of Music
Old Main	201	14	40	105.8	49	50.4	School of Journalism
Old Main	232	16	40	105.5	49	45.9	School of Journalism
Old Main	234	14	39	101.6	77	65.5	School of Journalism
Pedernales	114	12	37	97.9	42	57.5	Department of Occupational Education
Psychology	104	15	40	106.1	49	82.2	Philosophy
Psychology	126	13	26	68.4	49	44.4	Philosophy
Psychology	202	13	39	103.4	81	91.7	Psychology
Psychology	204	18	45	117.9	49	64.2	Psychology
Psychology	210	14	36	93.9	61	54.7	Psychology
Psychology	306	12	39	102.9	38	73.9	Psychology
Psychology	316	10	30	78.9	76	91.4	Psychology

BUILDING	ROOM	SECT	HRS	UTIL	SEATS	SSO	DEPARTMENT
Psychology	318	10	35	90.8	30	89.0	Psychology
Sabinal	101	8	40	104.2	24	60.4	Art and Design
Taylor-Murphy History	101	15	46	121.6	121	61.8	History
Taylor-Murphy History	104	13	40	104.2	132	68.0	History
Taylor-Murphy History	106	14	41	108.9	41	75.1	History
Taylor-Murphy History	110	13	40	105.0	41	79.2	History
Taylor-Murphy History	201	14	43	112.9	41	69.7	History
Theatre Center	201	9	27	71.1	28	57.9	Department of Theatre & Dance

Table Summary: 89 of 173 classrooms (51.4%) achieved a utilization rate greater than or equal to 100% of the Coordinating Board standard; 53 classrooms (30.6%) achieved a utilization rate between 75 and 99.9% of the standard; 11 classrooms (6.4%) achieved between 50 and 74.9% of the standard; 17 classrooms, all at RRHEC, (9.8%) achieved between 25 and 49.9%; and 3 classrooms at RRHEC (1.8%) fell below 25% of the classroom utilization standard.

Table 4A: Classroom Utilization by College, at RRHEC and Teaching Theatres

COLLEGE	CLASSROOMS	SECTIONS	HOURS	AVERAGE HRS	UTILIZATION RATE
Applied Arts	12	132	428.5	35.7	94.0%
Business	16	192	573.6	35.9	94.3%
Education	18	253	720.4	40.0	105.3%
Fine Arts	17	218	687.1	40.4	106.4%
Health Professions	10	144	436.8	43.7	114.9%
Liberal Arts	56	741	2136	38.1	100.4%
RRHEC	21	83	271.2	12.9	34.0%
Science	18	238	680.5	37.8	99.5%
Teaching Theatres	3	43	114.3	38.1	100.3%
University College	2	58	88.3	44.2	116.2%
	173	2102*	6136.7**	35.5	93.4%

*Includes Stacked Sections. ** Stacked Section Hours are not included.

Table 4B: Classroom Utilization by Building

BUILDING	CLASSROOMS	SECTIONS	HOURS	AVERAGE HOURS	UTILIZATION RATE
Agriculture	1	10	27.4	27.4	72.1%
Alkek Library	1	13	39	39.0	102.6%
Avery Building	21	83	271.2	12.9	34.0%
Centennial Hall	14	217	560.1	40.0	105.3%
Chemistry	2	26	77.1	38.6	101.4%
College of Education	13	179	532.2	40.9	107.7%
Derrick Hall	21	314	814.5	38.8	102.1%
Emmett & Miriam McCoy Hall	16	192	573.6	35.9	94.3%
Evans Liberal Arts	13	176	486.9	37.5	98.6%
Family & Consumer Sciences	6	65	230.7	38.5	101.2%
Flowers Hall	17	213	635.7	37.4	98.4%
Health Professions	10	144	436.8	43.7	114.9%
Hines Academic Center	5	55	163.2	32.6	85.9%
Jerome & Catherine Supple Science	2	26	75	37.5	98.7%
Joann Cole Mitte Art	5	47	237	47.4	124.7%

BUILDING	CLASSROOMS	SECTIONS	HOURS	AVERAGE HOURS	UTILIZATION RATE
Jowers Center	4	59	161.2	40.3	106.1%
Lampasas	1	15	27	27.0	71.1%
LBJ Student Center & Visitor Ctr	1	11	33	33.0	86.8%
Music	1	10	26.1	26.1	68.7%
Old Main	3	44	118.9	39.6	104.3%
Pedernales	1	12	37.2	37.2	97.9%
Psychology	8	105	289.7	36.2	95.3%
Sabinal	1	8	46.2	46.2	121.6%
Taylor-Murphy History	5	69	210	42.0	110.5%
Theatre Center	1	9	27	27.0	71.1%
	173	2102*	6136.7**	35.5	93.3%

*Includes Stacked Sections. ** Stacked Section Hours are not included.

Table 5: Class Lab Utilization Rates and Student Station Occupancy by Building and Room

BUILDING	ROOM	SECT	HRS	UTIL	SEATS	SSO	DEPARTMENT
Agriculture	101	8	22.8	91.2	36	54.5	Department of Agriculture
Centennial Hall	401	11	26.4	105.6	45	39.8	Biology
Chemistry	106	9	29.7	118.8	24	79.2	Chemistry and Biochemistry
Chemistry	113	11	36.3	145.2	24	90.5	Chemistry and Biochemistry
Chemistry	114	12	39.6	158.4	24	88.9	Chemistry and Biochemistry
Chemistry	117	9	29.7	118.8	24	89.4	Chemistry and Biochemistry
Chemistry	229	8	26.4	105.6	20	72.5	Chemistry and Biochemistry
Chemistry	232	8	26.4	105.6	20	66.3	Chemistry and Biochemistry
Chemistry	338	2	19.2	76.8	15	63.3	Chemistry and Biochemistry
College of Education	1025	2	19.2	76.8	13	46.2	Educ Admin & Psych Services
Derrick Hall	122	12	31.5	126.0	45	84.3	Mathematics
Derrick Hall	235	8	24.3	97.2	42	43.5	Computer Science
Derrick Hall	325	30	39.6	158.4	31	43.8	Computer Science
Derrick Hall	338	7	21	84.0	38	76.7	Mathematics
Derrick Hall	339	7	18	72.0	40	60.4	Mathematics
Evans Liberal Arts	123	7	25.2	100.8	25	69.1	Department of Geography
Evans Liberal Arts	156	19	30.7	122.8	38	32.3	Department of Geography
Evans Liberal Arts	226	12	19.8	79.2	53	46.9	Anthropology
Evans Liberal Arts	227	5	9	36.0	52	48.1	Anthropology
Family & Consumer Sciences	132	13	37	148.0	36	71.4	Department of Family & Consumer Sciences
Fire Station Studio	100	8	24	96.0	10	92.5	Sound Recording Studio
Health Professions	305	6	27	108.0	48	51.7	Department of Physical Therapy
Health Professions	333	9	35.3	141.2	42	62.2	Department of Physical Therapy
Jerome & Catherine Supple Science	128	13	27.3	109.2	31	67.0	Physics
Jerome & Catherine Supple Science	141	10	21	84.0	31	66.1	Physics
Jerome & Catherine Supple Scienc	224-A	14	36	144.0	29	67.5	Biology
Jerome & Catherine Supple Science	233	6	14.4	57.6	37	40.5	Biology
Jerome & Catherine Supple Science	261	28	42	168.0	27	85.4	Biology

BUILDING	ROOM	SECT	HRS	UTIL	SEATS	SSO	DEPARTMENT
Jerome & Catherine Supple Science	265-A	26	39	156.0	26	86.7	Biology
Jerome & Catherine Supple Science	270-A	15	49.6	198.4	25	62.1	Biology
Jerome & Catherine Supple Science	363	8	26.4	105.6	17	89.7	Biology
Jerome & Catherine Supple Science	422-A	18	59.4	237.6	24	76.6	Biology
Jerome & Catherine Supple Science	429-A	16	52.8	211.2	20	97.5	Biology
Jerome & Catherine Supple Science	433	17	56.1	224.4	21	86.8	Biology
Joann Cole Mitte Art	1130	10	52.8	211.2	29	58.3	Art and Design
Joann Cole Mitte Art	2115	9	57.6	230.4	36	55.9	Art and Design
Joann Cole Mitte Art	2120	17	44.1	176.4	40	22.5	Art and Design
Joann Cole Mitte Art	2131	7	46.2	184.8	41	48.1	Art and Design
Joann Cole Mitte Art	3102-C	6	39.6	158.4	19	78.9	Art and Design
Joann Cole Mitte Art	3107-A	8	51	204.0	27	71.3	Art and Design
Joann Cole Mitte Art	3107-F	7	40.8	163.2	28	65.3	Art and Design
Joann Cole Mitte Art	4105	16	39.6	158.4	29	26.5	Art and Design
Joann Cole Mitte Art	4107	3	19.8	79.2	27	63.0	Art and Design
Joann Cole Mitte Art	4112	8	26.4	105.6	36	25.0	Art and Design
Jowers Center	A204	11	29	116.0	50	72.5	Dept of Health, PE & Recreation
Jowers Center	A205	14	35.6	142.4	50	59.7	Dept of Health, PE & Recreation
Jowers Center	A206	14	27	108.0	45	45.6	Dept of Health, PE & Recreation
Jowers Center	A207	7	18.4	73.6	51	56.3	Dept of Health, PE & Recreation
Music	121	9	22.5	90.0	17	60.1	School of Music
Music	124	9	23.2	92.8	49	37.9	School of Music
Music	216	9	26.7	106.8	200	13.4	School of Music
Music	222	11	24.3	97.2	200	10.1	School of Music
Music	224	17	45.6	182.4	200	15.0	School of Music
Old Main	212	9	24.6	98.4	21	47.1	School of Journalism
Old Main	230	19	36.9	147.6	21	50.1	School of Journalism
Old Main	238	20	38.4	153.6	24	40.6	School of Journalism
Roy F Mitte Technology & Physics	4234	11	26.1	104.4	68	27.0	Department of Technology
Roy F Mitte Technology & Physics	4236	16	45	180.0	29	82.5	Department of Technology
Theatre Center	206	8	22.5	90.0	112	72.1	Department of Theatre & Dance

Table Summary: 41 of 58.45 class labs (70.1%) achieved a utilization rate greater than or equal to 100% of the Coordinating Board standard for class labs; 14 class labs (24.0%) achieved a utilization rate between 75 and 99.9% of the standard; 3 class labs (5.1%) achieved between 50 and 74.9% of the standard; and 1 class lab (1.7%) fell below 50% of the class lab utilization standard.

Table 5A: Class Lab Utilization by College

COLLEGE	CLASS LABS	SECTIONS	HOURS	AVERAGE HOURS	UTILIZATION RATE
Applied Arts	2	21	59.8	29.9	119.6%
Education	5	48	129.2	25.8	103.4%
Fine Arts	20	210	706.6	35.3	141.3%
Health Professions	2	15	62.3	31.2	124.6%
Liberal Arts	4	43	84.7	21.2	84.7%
Science	25.45	332	863.2	33.9	135.7%
	58.45	669*	1905.8**	32.6	130.4%

*Includes Stacked Sections. ** Stacked Section Hours are not included.

Table 5B: Class Lab Utilization by Building

BUILDING	CLASS LABS	SECTIONS	HOURS	AVERAGE HOURS	UTILIZATION RATE
Agriculture	1	8	22.8	22.8	91.2%
Centennial Hall	1	11	26.4	26.4	105.6%
Chemistry	7	59	207.3	29.6	118.5%
College of Education	1	2	19.2	19.2	76.8%
Derrick Hall	5	64	134.4	26.9	107.5%
Evans Liberal Arts	4	43	84.7	21.2	84.7%
Family & Consumer Sciences	1	13	37	37.0	148.0%
Fire Station Studio	1	8	24	24.0	96.0%
Health Professions	2	15	62.3	31.2	124.6%
Jerome & Catherine Supple Scienc	11	171	424	38.5	154.2%
Joann Cole Mitte Art	10	91	417.9	41.8	167.2%
Jowers Center	4	46	110	27.5	110.0%
Music	5	55	142.3	28.5	113.8%
Old Main	3	48	99.9	33.3	133.2%
Roy F Mitte Technology & Physics	2	27	71.1	35.6	142.2%
Theatre Center	1	8	22.5	22.5	90.0%
	58.45	669	1905.8	32.6	130.4%

*Includes Stacked Sections. ** Stacked Section Hours are not included.

The three teaching theatres, Alkek Library 250, Centennial 157 and LBJ Student Center 4-16.1, were scheduled by the Registrar. The average weekly hours for the 3 teaching theatres were 38.1 hours (100.1% of the Coordinating Board standard). The following table shows teaching theatre usage by scheduled course.

Table 6: Teaching Theatre Schedules

Alkek Library 250 (13 Sections, 39 Hours, 102.6 % of CB Standard, Student Station Occupancy 81.0%)

	Monday	Tuesday	Wednesday	Thursday	Friday
8:00	MATH 1315	HIST 1310	MATH 1315	HIST 1310	
9:30	GEO 1310	PHIL 1305	GEO 1310	PHIL 1305	
11:00	POSI 2310	BIO 1320	POSI 2310	BIO 1320	
12:30	MATH 1315	TH 2313	MATH 1315	TH 2313	
2:00	ENG 2360	MATH 1315	ENG 2360	MATH 1315	
3:30	MC 2319	HIST 1310	MC 2319	HIST 1310	
5:00					
6:30		BIO 1421		BIO 1421	

Centennial Hall 157 (15 Sections, 39.3 Hours, 103.2 % of CB Standard, Student Station Occupancy 81.0%)

	Monday	Tuesday	Wednesday	Thursday	Friday
8:00	ENG 2310	MC 1301	ENG 2310	MC1301	
9:30	MATH 1311	COMM 1310	MATH 1311	COMM 1310	
11:00	COMM 1310	PSY 1300	COMM 1310	PSY 1300	
12:30	POSI 2320	COMM 1310	POSI 2320	COMM 1310	
2:00	ENG 2320	PSY 3300	ENG 2320	PSY 3300	
3:30	POSI 2310	MC 4302	POSI 2310	MC 4302	
5:00	COMM 1310	CHEM 1310		CHEM 1310	

LBJ Student Center 4-16.1 (11 Sections, 33 Hours, 86.8 % of CB Standard, Student Station Occupancy 77.5%)

	Monday	Tuesday	Wednesday	Thursday	Friday
8:00		POSI 2310		POSI 2310	
9:30	POSI 2310	ANTH 2414	POSI 2310	ANTH 2414	
11:00	PHIL 1305	ANTH 3305	PHIL 1305	ANTH 3305	
12:30	ENG 2360	MATH 1315	ENG 2360	MATH 1315	
2:00	SOCI 3333	POSI 2310	SOCI 3333	POSI 2310	
3:30	HIST 1310	BIO 1421	HIST 1310	BIO 1421	

Table Summary: 13 academic departments taught 39 course sections in the 3 teaching theatres; Anthropology (2 sections), Biology (3 sections), Chemistry (1), Mass Communications (7), English (4), Geography (1), History (3), Math (6), Philosophy (2), Political Science (6), Psychology (2), Sociology (1), and Theatre (1).

UNIFORM START TIME POLICY AND UTILIZATION OF CLASSROOMS BY HOUR AND DAY

In order to increase scheduling opportunities for students, available research time for faculty as well as not negatively impact classroom/class lab utilization, a new uniform start time policy was implemented for fall 2007. The policy does not apply to RRHEC. This new policy requires;

- **All** classes and labs begin at one of the following times Monday thru Friday: 8:00am, 9:30am, 11:00am, 12:30pm, 2:00pm, 3:30pm, 5:00pm, 6:30pm or 8:00pm. (65 exceptions- not including Start Times before 8:00 am or Saturday courses; 13 of 65 scheduled in classrooms, 32 of 65 scheduled in class labs, 20 of 65 in other room types).
- All classes must end no less than 15 minutes prior to the next scheduled class time. (22 exceptions- 5 of 22 in classrooms, 15 of 22 in class labs, 2 of 22 in other room types).
 - Four-credit classes (e.g., Modern Languages and Mathematics courses) that meet four or five days a week will be scheduled at the times noted above Monday through Friday (no exceptions found).
 - Three-credit classes that meet 2 hours 30 minutes a week may be scheduled in 1 hour 15 minutes time slots on Monday and Wednesday, Tuesday and Thursday; in 2 hour 30 minute time slots on Friday; or in 50-minute time slots three days a week (52 exceptions- 10 of 52 in classrooms, 5 of 52 in class labs, 37 of 52 in other room types).
 - One-credit classes that meet once a week will be scheduled in 60-minute time slots on any day at the times noted above, e.g. 8AM classes will meet from 8 AM to 9 AM (no exceptions found).
- Faculty members who request flex classes (different semester start dates) may teach flex classes only on Fridays.

Exception to these rules were reviewed by the Class Scheduling Committee (CSC) whose membership included the Associate Vice President for Enrollment Management (committee chair), Registrar, the Dean of University College, the Chair of Sociology, and the Associate Vice President for Finance and Support Services Planning. Please contact the Registrar's Office for information regarding courses that received an exemption. In addition, the Uniform State Time Policy will be revised effective spring 2009. You can also contact the Registrar's Office for information regarding the revisions to the policy.

Table 7 on the next page shows the percentage of classrooms in use by day and hour in 15 minute intervals for the 152 main campus classrooms.

Table 7: Percent of Classrooms in Use by Day and Hour (Fall 2007)

Time	M%	T%	W%	TH%	F%
8:00 AM	48.0	60.5	46.1	58.6	4.6
8:15 AM	48.0	60.5	46.1	58.6	4.6
8:30 AM	48.0	60.5	46.1	58.6	4.6
8:45 AM	48.0	60.5	46.1	57.9	4.6
9:00 AM	43.4	59.9	42.8	58.6	2.0
9:15 AM	43.4	59.2	42.1	58.6	2.0
9:30 AM	95.4	94.7	96.1	93.4	15.8
9:45 AM	95.4	94.7	96.1	93.4	15.8
10:00 AM	94.1	94.1	94.7	92.8	15.8
10:15 AM	94.1	94.1	94.7	92.8	15.8
10:30 AM	94.1	93.4	88.2	92.1	7.9
10:45 AM	93.4	93.4	87.5	90.8	7.2
11:00 AM	95.4	96.1	96.1	97.4	15.8
11:15 AM	95.4	96.1	96.1	97.4	15.1
11:30 AM	94.7	96.1	96.1	97.4	15.1
11:45 AM	94.7	94.1	96.1	97.4	8.6
12:00 PM	90.1	94.7	90.8	96.1	9.2
12:15 PM	88.8	94.7	90.8	95.4	6.6
12:30 PM	96.1	96.7	95.4	95.4	11.8
12:45 PM	96.1	96.7	95.4	95.4	11.8
1:00 PM	94.1	96.7	93.4	95.4	12.5
1:15 PM	94.1	96.7	93.4	95.4	12.5
1:30 PM	89.5	94.7	88.8	93.4	7.2
1:45 PM	87.5	92.8	86.8	91.4	5.9
2:00 PM	90.8	92.8	90.1	92.8	9.2
2:15 PM	90.8	92.8	90.1	92.8	9.2
2:30 PM	90.8	92.8	90.1	92.8	9.2
2:45 PM	90.8	92.8	90.1	92.8	9.2
3:00 PM	90.1	93.4	89.5	93.4	5.3
3:15 PM	90.1	92.8	89.5	93.4	3.9
3:30 PM	79.6	70.4	78.9	68.4	2.6
3:45 PM	79.6	70.4	78.9	68.4	2.6
4:00 PM	78.9	69.1	78.3	67.1	2.6
4:15 PM	78.9	68.4	78.3	66.4	2.6
4:30 PM	78.9	67.8	78.3	65.8	2.6
4:45 PM	77.0	65.8	76.3	63.8	2.6
5:00 PM	38.8	30.9	36.2	28.9	1.3
5:15 PM	38.8	30.3	36.2	27.6	1.3
5:30 PM	36.8	28.9	34.2	27.6	0.7
5:45 PM	36.8	28.9	33.6	27.6	0.0
6:00 PM	36.8	29.6	32.9	28.3	0.0
6:15 PM	36.2	29.6	31.6	28.3	0.0
6:30 PM	55.9	50.7	45.4	37.5	1.3
6:45 PM	55.3	50.7	45.4	37.5	1.3
7:00 PM	54.6	50.0	44.1	34.9	1.3
7:15 PM	54.6	50.0	44.1	34.9	1.3
7:30 PM	54.6	50.0	44.1	34.9	1.3
7:45 PM	53.3	50.0	44.1	34.9	1.3
8:00 PM	44.7	42.8	38.8	29.6	1.3
8:15 PM	44.7	42.8	38.8	28.9	1.3
8:30 PM	44.1	42.8	38.8	29.6	1.3
8:45 PM	44.1	42.8	38.8	29.6	1.3
9:00 PM	44.1	42.8	38.8	29.6	1.3
9:15 PM	43.4	42.8	38.8	28.9	1.3
9:30 PM	3.3	3.9	2.0	2.0	0.0
9:45 PM	1.3	2.0	0.7	2.0	0.0
10:00 PM	0.7	1.3	0.0	1.3	0.0

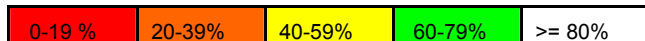


Table 7 illustrates that the 152 main campus classrooms at Texas State are heavily utilized between 9:30 am to 3:30 pm Monday through Thursday with a range 93.4% (142 classrooms) to 97.4 (148 classrooms) in use. When compared to fall 2006 data, with the exceptions of Fridays and 9:00 to 9:15 am on Monday and Wednesday, the percent of classrooms in use increased between 8:00 am and 6:15 pm. After 6:15 pm classroom use increased on Monday and Tuesday but decreased on Wednesday, Thursday and Friday (See graphs 4-8 p. 23 and p.24)

Monday/Wednesday Classroom Use: Table 7 shows that the peak morning use occurs 9:30 am with 95.4% to 96.1% of classrooms in use. At this peak time 6 classrooms are available. Also at this same time there are 30 lecture sections scheduled in a class lab, special class lab or conference room that possibly could have been scheduled in one of these classrooms to help maximize classroom utilization.

The afternoon peak on Monday and Wednesday is at 12:30 pm with a range of 95.4% to 96.1% of classrooms in use. At this peak time there are 6 available classrooms and 17 lecture sections scheduled in a class lab, special class lab or conference room that possibly could have been scheduled in a classroom.

Tuesday/Thursday Classroom Use: The peak morning use occurs at 11:00 am with 96.1% - 97.4% of classrooms in use. At this peak time, there are 4 available classrooms and 16 lecture sections scheduled in a class lab, special class lab or conference room that possibly could have been scheduled in a classroom.

The afternoon peak time on Tuesday and Thursday is at 12:30 with a range of 95.4% to 96.7% of classrooms in use. At this peak time there are 5 available classrooms and 14 lecture sections scheduled in a class lab or special class lab that possibly could have been scheduled in a classroom. (No lectures were scheduled in a conference room at this time).

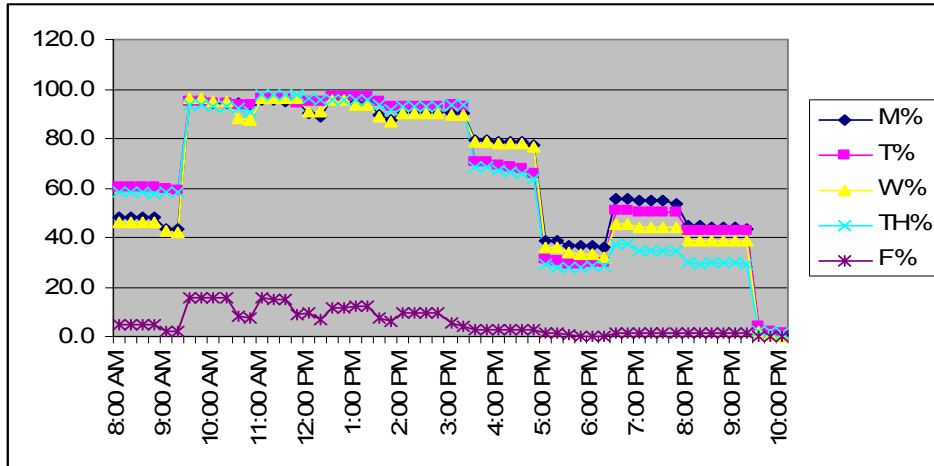
Friday Classroom Use: As shown in Table 7, classroom use dropped significantly on Friday. It should be mentioned that the Uniform Start Time Policy did not promote elimination of Friday classes. During discussion of the proposed policy, both Mathematics and English indicated they needed to retain the MWF 50 minute class schedule; however; Table 8 (p. 25) shows that only 1.06% of the 189 Math sections, and only 0.79% of the 253 English sections were taught on Friday.

Evening Classroom Use: Table 7 shows that Texas State uses up to 55.9% of its classrooms for evening courses (taught at 6:30 pm). In the evening there are approximately 67 classrooms available and 47 lecture sections scheduled in a class lab, special class lab or conference room that possibly could have been scheduled in a classroom.

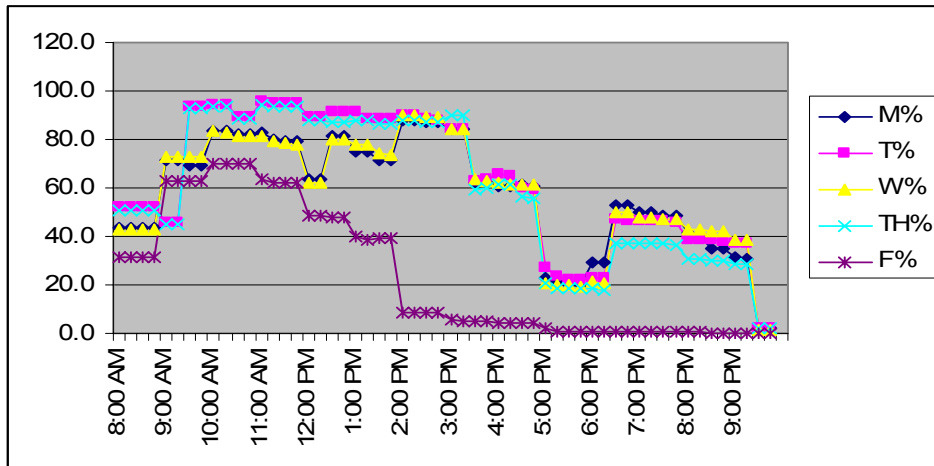
As stated above, a number of lecture sections that were scheduled in a class lab, special class lab or conference room could have possibly been scheduled in a classroom to help maximize classroom utilization. To this end it is understood that not all of the scheduling or teaching constraints faced by academic departments and their faculty are incorporated into this analysis. The information was offered to suggest that schedule makers closely investigate the designated room type and the placement of courses in a specific room.

Graph 3: % of Classrooms Occupied for All Days of the Week

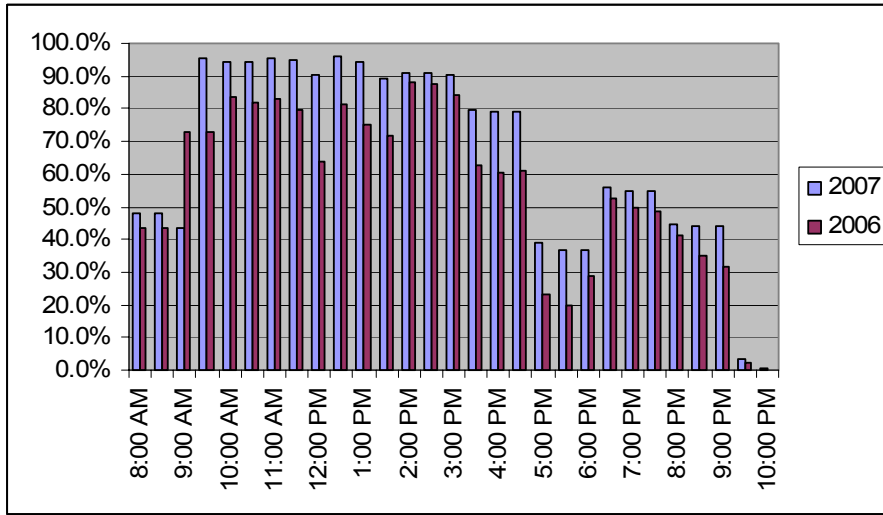
Fall 2007



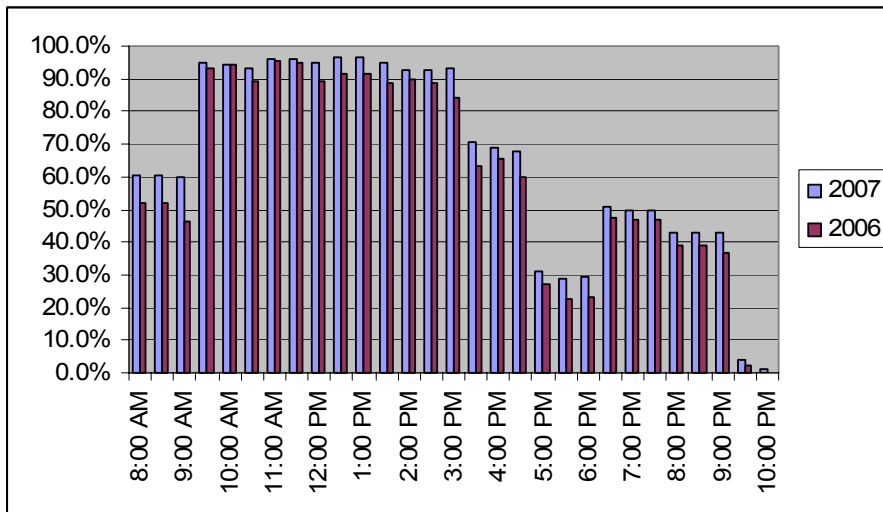
Fall 2006



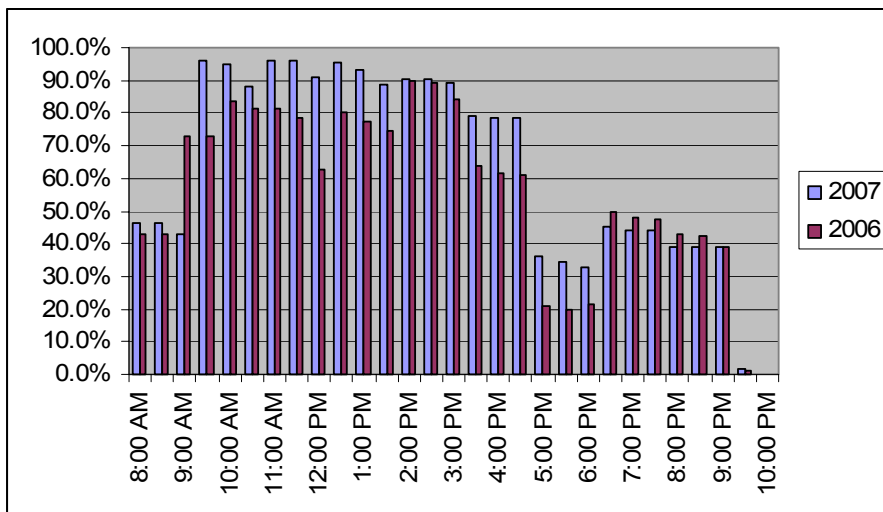
Graph 4: Classrooms In Use on Monday



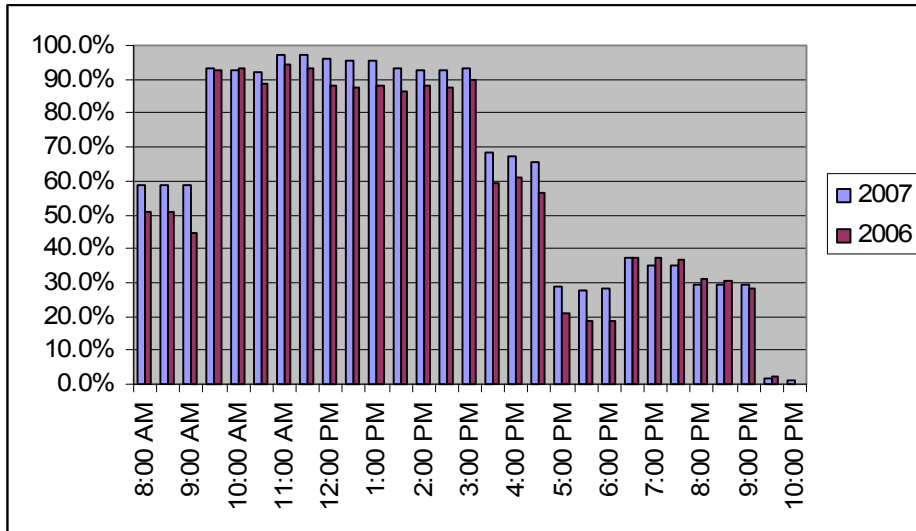
Graph 5: Classrooms In Use on Tuesday



Graph 6: Classrooms In Use on Wednesday



Graph 7: Classrooms In Use on Thursday



Graph 8: Classrooms In Use on Friday

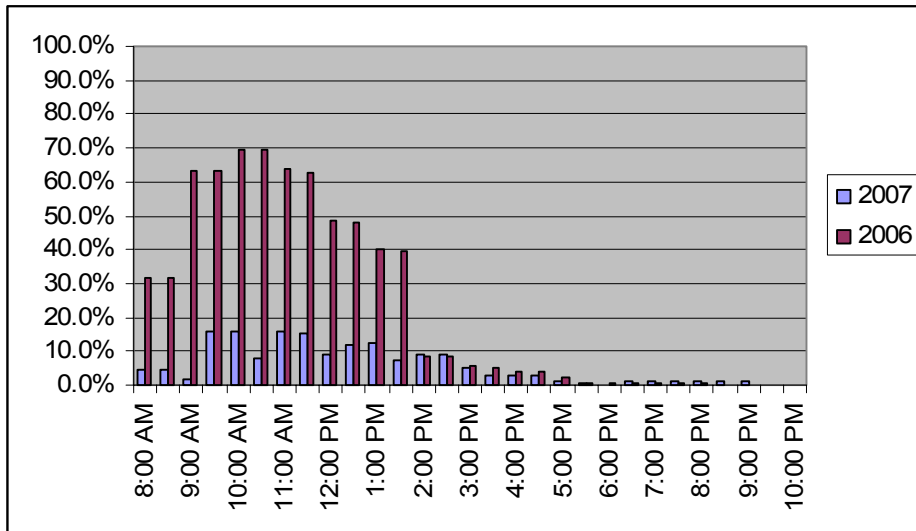


Table 8: Percent of Course Sections on Fridays, At or Before 8:00 AM or At or After 3:30 PM

College	Department	Sections	% of Sections on Friday	% of Sections at or before 8:00 AM	% of Sections at or after 3:30 PM
Applied Arts	Aerospace Studies	9	0.00%	11.11%	33.33%
	Agriculture	40	5.00%	5.00%	30.00%
	Criminal Justice	60	0.00%	5.00%	26.67%
	Family and Consumer Sciences	89	0.00%	14.61%	23.60%
	Military Science	5	0.00%	0.00%	20.00%
	Occupational Education	12	8.33%	0.00%	66.67%
	Applied Arts Total	215	1.40%	8.84%	28.37%
Business	Accounting	53	20.75%	7.55%	32.08%
	Computer Information Systems	45	6.67%	11.11%	22.22%
	Finance and Economics	75	1.33%	16.00%	24.00%
	Management	76	1.32%	6.58%	48.68%
	Marketing	32	0.00%	3.13%	31.25%
	Business Total	281	5.69%	9.61%	32.74%
Education	Curriculum & Instruction	124	0.00%	8.87%	61.29%
	Education, Dean of	12	0.00%	0.00%	83.33%
	Ed Ad & Psy Serv	77	1.30%	0.00%	88.31%
	HPER	224	2.68%	13.84%	23.66%
	Education Total	437	1.60%	9.61%	47.37%
Fine Arts	Art & Design	195	2.05%	21.54%	19.49%
	Communications	170	1.18%	2.35%	31.18%
	Mass Communications	110	1.82%	10.00%	34.55%
	Music	199	14.07%	6.03%	38.69%
	Theatre	105	6.67%	1.90%	8.57%
	Fine Arts Total	779	5.52%	9.11%	27.60%
Health Professions	Clinical Laboratory Science	16	12.50%	25.00%	6.25%
	Communication Disorders	26	11.54%	15.38%	7.69%
	Health Information Management	17	0.00%	5.88%	11.76%
	Healthcare Administration	44	9.09%	2.27%	50.00%
	Physical Therapy	22	18.18%	27.27%	22.73%
	Radiation Therapy	8	12.50%	50.00%	0.00%
	Respiratory Care	10	0.00%	10.00%	0.00%
	Social Work	42	0.00%	0.00%	57.14%
	Health Professions Total	185	7.57%	11.35%	30.27%
Liberal Arts	Anthropology	50	10.00%	6.00%	30.00%
	English	253	0.79%	11.46%	27.67%
	Geography	123	5.69%	0.00%	37.40%
	History	73	0.00%	6.85%	32.88%
	Modern Languages	115	0.00%	8.70%	26.96%
	Philosophy	72	43.06%	4.17%	8.33%
	Political Science	84	0.00%	2.38%	40.48%
	Psychology	80	1.25%	6.25%	26.25%
	Sociology	53	0.00%	1.89%	41.51%

College	Department	Sections	% of Sections on Friday	% of Sections at or before 8:00 AM	% of Sections at or after 3:30 PM
	Women's Studies	2	0.00%	0.00%	0.00%
	Liberal Arts Total	905	5.08%	6.41%	29.72%
Science	Biology	277	8.30%	11.55%	25.63%
	Chemistry	114	14.04%	9.65%	27.19%
	Computer Science	90	7.78%	7.78%	35.56%
	Engineering	14	0.00%	28.57%	35.71%
	Mathematics	189	1.06%	11.64%	23.81%
	Physics	65	0.00%	13.85%	10.77%
	Technology	63	4.76%	14.29%	30.16%
	Science Total	812	6.28%	11.58%	25.86%
University	General Studies	2	0.00%	0.00%	0.00%
	Honors	12	8.33%	0.00%	25.00%
	University Seminar	117	0.00%	11.97%	24.79%
	University College Total	131	0.76%	10.69%	24.43%

UTILIZATION OF CLASSROOMS AT THE ROUND ROCK HIGHER EDUCATION CENTER (RRHEC)

During the fall 2007 semester 437.1 hours were schedule by Texas State at the RRHEC (55.2 hour increase from fall 2006). Courses scheduled by Austin Community College, Temple College at Taylor or at locations other than the Avery Building are not included in this report. In addition, 2 “stacked classes” (6.6 hours) and 45 sections taught in rooms not designated as a classroom, such as ITV or meeting rooms, have been removed from the RRHEC classroom utilization calculations.

Included in the following table are 271.2 hours (81 sections) scheduled in 21 designated classrooms under the jurisdiction of Texas State in the Avery Building. The average hours offered per classroom at the Avery Building are 12.9 hours (34% of the Coordinating Board standard). Student Station Occupancy (SSO) is 46.2% and only 1 of 21 classrooms was in use 50% or more of the Coordinating Board standard by Texas State.

Table 9: Avery Building Classroom Utilization and Student Station Occupancy

ROOM	SECTIONS	HOURS	UTIL RATE	CAP	AVAL SEATS	ENROLL	SSO
319	6	22.8	60.0	35	210	90	42.9
407	7	18.9	49.7	50	350	207	59.1
357	5	16.8	44.2	35	175	92	52.6
124	5	16.5	43.4	35	175	82	46.9
362	5	16.5	43.4	35	175	53	30.3
453	6	16.5	43.4	50	300	95	31.7
318	5	16.2	42.6	35	175	71	40.6
358	4	15.3	40.3	35	140	60	42.9
123	4	13.2	34.7	35	140	75	53.6
403	4	13.2	34.7	50	200	82	41.0
405	4	13.2	34.7	50	200	102	51.0
451	4	13.2	34.7	50	200	93	46.5
408	4	12.9	33.9	50	200	114	57.0
312	3	9.9	26.1	35	105	57	54.3
313	3	9.9	26.1	35	105	64	61.0
404	3	9.9	26.1	50	150	68	45.3
414	3	9.9	26.1	35	105	56	53.3
454	3	9.9	26.1	35	105	38	36.2
363	2	6.6	17.4	35	70	21	30.0
420	2	6.6	17.4	35	70	38	54.3
406	1	3.3	8.7	50	50	14	28.0

The characteristics of the student body and course offerings at the Round Rock Higher Education dictate evening usage of the facilities. Although these characteristics are significantly different than those of main campus, by Coordinating Board rule, the classrooms at Multi-Institution Teaching Centers (MITC) such as the RRHEC are held to the same utilization standards and are included in the sponsoring institution calculations.

The average hours of instruction offered in designated classrooms at Texas State, had the classrooms in the Avery Building been excluded from the calculations, would have been 38.6 hours (101.5% of the Coordinating Board standard) instead of 35.4 hours (93.2% of the Coordinating Board standard).

CLASSROOM COURSE DISTRIBUTION BY SEATING CAPACITY

There are 10,745 seats distributed among 173 classrooms at Texas State; 9,890 seats in 152 main campus classrooms and 855 seats in 21 Avery Building (RRHEC) classrooms. The number of seats ranges from 21 to 402 on main campus and 35 to 50 at Round Rock. The following table and graph provide utilization information and student station occupancy for main campus classrooms by seating capacity.

Table 10: Distribution of Course Sections, Average Contact Hours and Student Station Occupancy by Classroom Seating Capacity

SEATS	ROOM COUNT	NUMBER OF SECTIONS	AVERAGE WEEKLY CONTACT HOURS	SSO
25 or less	9	94	41.2	75.0
26 - 50	112	1354	39.2	64.5
51 - 75	16	212	36.4	55.0
76 - 100	14	173	34.4	55.2
101 - 125	8	109	37.8	58.3
126 - 150	6	67	35.4	62.6
151 - 175	1	11	24.3	78.3
176 - 200	2	21	24.6	60.7
Over 200	5	64	35.4	75.1

USE OF ROOMS NOT CODED AS CLASSROOMS AND CLASS LABS

There were 2478 hours (840 course sections) taught in rooms not designated as classrooms or class labs for fall 2007. These hours were removed from the utilization calculations.

Table 11: Utilization of Rooms Not Coded as Classrooms and Class Labs

Room Type	07 Room Ct	07 Sections	07 Hours	06 Room Ct	06 Sections	06 Hours
Class Lab Service	0	0	0	1	1	3
Special Class Lab	79	348	1123.4	84	321	1068.1
Spec Class Lab Serv	1	1	3	1	1	2
Indiv Study Lab	6	14	48.6	5	12	38
Non-Class Lab	2	4	19.8	1	2	13.6
Office	16	21	63	17	23	68.9
Conference Room	12	33	96.6	10	17	54
Reading/Study Room	4	12	37.7	4	11	34.1
Open Stack Reading	1	3	9.9	1	2	6.6
Armory	2	9	18.1	2	9	17.8
Athletic/P.E.	12	102	231.2	12	106	230.4
Athletic/P.E. Service	5	17	34.9	0	8	16.4
Media Production	5	22	69.9	2	9	28.2
Clinic	1	1	3.3	1	1	1
Other	4	14	42.3	6	25	82.9
Alteration Area (Derrick 118)	0	0	0	1	9	25
Assembly	7	49	151.7	4	21	66.5
Assembly Service	1	5	15	1	8	24
Meeting Room	36	185	509.6	25	107	299.8
Total	194	840	2478	178	693	2080.3

*Stacked Courses not included

Over all, the number of course sections offered in rooms not classified as classrooms or class labs increased by 147 sections from fall 2006 to fall 2007. Total hours increased by 397 hours. Course sections, especially those taught in offices, conference rooms, and meeting rooms should be moved when possible to designated classrooms or class labs to improve the utilization of those rooms and the overall utilization at Texas State.

CONCLUSIONS

Ranking in the State

The Coordinating Board released fall 2007 rankings for classroom utilization on December 18, 2007 and Texas State is ranked 9th in the State (up from 17th in the state in 2006) with a weekly average of 35.38 hours (34.6 in 2006). This is 2.62 hours below the minimum standard of 38 hours as defined by the Coordinating Board. If RRHEC were excluded, Texas State would have been 3rd in the state at 38.5 contact hours.

Table 12: Fall 2007 State-Wide Classroom Utilization Rankings (Top 20)

Fall 2007 Rank	Institution	Fall 2007 Classrooms (Type 110)	Fall 2007 Average Weekly Hours of Use
1	The University of Texas at San Antonio	142.00	43.80
2	Midwestern State University	76.00	40.02
3	The University of Texas at Austin	442.00	38.05
4	The University of Texas at Brownsville*	74.00	37.18
5	The University of Texas - Pan American	136.00	36.54
6	Tarleton State University	97.00	36.49
7	Texas Woman's University	95.00	35.75
8	Texas A&M University	263.00	35.45
9	Texas State University-San Marcos	173.00	35.38
10	Texas Tech University	225.00	35.18
11	The University of Texas at Dallas	93.00	35.14
12	Texas A&M International University	45.00	34.92
13	The University of Texas at El Paso	126.00	34.81
14	Texas Southern University	110.00	34.16
15	The University of Texas of the Permian Basin	33.00	33.70
16	The University of Texas at Tyler	56.00	33.55
17	Texas A&M University-Corpus Christi	70.00	32.67
18	Sam Houston State University	142.00	32.52
19	University of North Texas	186.00	32.00
20	University of Houston	209.00	31.81

The Coordinating Board released fall 2007 class lab rankings on December 18, 2007. Texas State is number 4 in the state for class lab utilization with a weekly average of 32.52 hours. This average is 7.5 hours above the state standard. Fourteen (14) institutions exceeded the class lab standard of 25 hours of use per class lab (see Table 13 on the following page).

Table 13: Fall 2007 State-Wide Class Lab Utilization Rankings (Top 20)

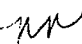
Fall 2007 Rank	Institution	Fall 2007 Class Labs (Type 210)	Fall 2007 Average Weekly Hours of Use
1	Texas A&M International University	8.00	34.41
2	The University of Texas at Brownsville*	31.00	32.96
3	The University of Texas at Austin	148.00	32.75
4	Texas State University-San Marcos	58.45	32.52
5	The University of Texas at Tyler	8.00	32.37
6	The University of Texas at San Antonio	58.00	30.96
7	The University of Texas at Dallas	22.00	28.97
8	Texas Tech University	84.67	28.70
9	Texas A&M University-Galveston Campus	14.00	28.60
10	Sam Houston State University	45.50	27.59
11	Texas A&M University	150.75	27.19
12	University of Houston-Downtown	30.00	25.44
13	Stephen F. Austin State University	30.00	25.41
14	The University of Texas - Pan American	51.00	25.35
15	Tarleton State University	20.70	24.70
16	Texas Woman's University	73.00	24.26
17	University of North Texas	113.00	23.54
18	West Texas A&M University	52.00	22.57
19	Texas A&M University-TeXarkana	3.00	21.10
20	Texas A&M University-Corpus Christi	53.50	20.48

TEXAS  STATE
UNIVERSITY
SAN MARCOS
The rising STAR of Texas

April 22, 2008

TO: Council of Academic Deans

VIA: Perry Moore
Provost and Vice President for Academic Affairs

FROM: Nancy Nusbaum 
Associate Vice President for Finance and Support Services Planning

SUBJECT: Classroom and Class Lab Utilization Recommendations

Texas State has 173 designated classrooms (152 on main campus and 21 at Round Rock) and 58.45 designated class labs (all on main campus) on record for fall 2007. The Avery Building at the Round Rock Higher Education Center (RRHEC) is currently considered as being part of main campus by the Coordinating Board and those classrooms are factored into the university's utilization rate.

The average weekly hours of scheduled instruction for classrooms at Texas State for the fall 2007 semester are 35.4 contact hours (93.2% of the Coordinating Board standard for classrooms). The average weekly hours of instruction for class labs at Texas State for the fall 2007 semester are 32.5 hours (130.0% of the Coordinating Board standard for class labs).

We have determined only 146 sections needed to be scheduled in designated classrooms in order to achieve the Coordinating Board standard of 38.0 contact hours. Texas State already exceeds the Coordinating Board standard for class labs; therefore, the following recommendations are offered to help Texas State achieve the Coordinating Board standard for classrooms.

1. Reduce the number of lecture sections offered in class labs by moving them to classrooms – For fall 2007, 379 lecture sections were offered in class labs. In particular, 47 lecture sections were offered in the evening hours when 67 classrooms were available for scheduling.
2. Avoid scheduling courses in rooms not designated as a classroom or class lab – For fall 2007, 21 sections were offered in offices, 33 sections were offered in conference rooms, and 185 sections were offered in meeting rooms. These sections could have been scheduled in classrooms.
3. Schedule "arranged" classes in a classroom on a specific day(s) and at specific times – There were 207 ARR classes scheduled for fall 2007.

The University of Oregon offers tuition discounted (10%) courses if they start prior to 9:00 a.m. or after 3:00 p.m. and have 100 or more students enrolled. A suggestion for review and consideration for Texas State would be to offer more courses once a week on Friday afternoons for 165 minutes with reduced tuition and higher pay for the faculty who teach them.

/nn

APPENDIX

Process

The Associate Vice President for Finance and Support Services Planning is responsible for space management and reporting for Texas State. The Associate Vice President and the Coordinator of Facilities Inventory maintain the campus building and room inventory database and prepare the fall semester utilization of instructional space report.

The Registrar's Office, working with Institutional Research, is required to submit the CBM005– Building and Room Report to the Coordinating Board by November 1. Shortly after the twelfth class day of the fall semester, the Coordinator of Facilities Inventory requests a copy of the CBM005 to conduct a preliminary analysis of all rooms listed in the report. The purpose is to identify possible “room type” changes in order to maximize the instructional hours included in the utilization calculations by the Coordinating Board. Comparing “room type” (classroom, class lab, special class lab, meeting room etc.) to “total hours of scheduled instruction” can help determine the best classification for a room. For example, if a room is identified as a “special class lab” and there are 25 or more hours of instruction scheduled in that room, it is “flagged” for a possible change to a “class lab” (to be included in the utilization calculations). Conversely, if a room is classified as a “class lab” and less than 25 hours of scheduled instruction are offered in that room, it may be better to classify the room as a “special class lab.” In these situations, historical class data is analyzed and/or the departments controlling the room are contacted to determine the best coding structure before any changes are made.

Formula to calculate individual room utilization:

The “stacked” classes (those that meet on the same day at the same time in the same room but have a different course and section number) are removed. This is accomplished by searching for duplicate data records based on location (building & room), days of the week the class meets and start time. After the duplicate records are identified, the class duration is examined. Duration refers to the length of the class period in minutes. In the event that durations are not identical, the course record with the greater duration is retained and all other duplicates are removed.

The days of the week the class meets (e.g., 135 (MWF), 24 (TT), 13 (MW), etc.) is converted to identify the total number of days (e.g., 135 = 3, 24 = 2, etc.) and multiplied by the duration to arrive at the weekly minutes the class meets.

Weekly minutes from each course section taught in a particular room are added together and divided by 50 to get the weekly instructional hours for that room (a 50-minute hour is used to compensate for pass-through time).

After the weekly (non-stacked) instructional hours for each room are calculated, rooms that are coded as classrooms (room type = 110) and class labs (room type = 210) in the facilities inventory are extracted from the list.

The total weekly hours of instruction for a classroom is divided by 38 and the weekly hours of instruction for class labs is divided by 25 to determine a utilization rate based on Coordinating Board standards (38 hours of scheduled use per week for classrooms and 25 hours of scheduled use per week for class labs).

Example:

MC 4320, section 1 meets in Old Main-201 for 75 minutes on Tuesday and Thursday. To determine weekly instructional hours for MC 4320 section 1, multiply the number of days

the course convenes by the course duration and divide the result by 50. The Weekly Instructional Hours for MC 4320 section 1=3 [(2*75)/50]

To determine the utilization rate for Old Main-201, repeat the process for each course section schedule in Old Main-201 and sum the Weekly Instructional Hours. Divide the sum by 38 (Old Main-201 is coded as a classroom).

Table 14: Room Utilization Example

Bldg	Room	Prefix	Course	Sect	Days	Duration	Days2	Contact Hrs
501	201	MC	4307	1	13	100	2	4
501	201	MC	3311	1	1	75	1	1.5
501	201	MC	5308	1	4	165	1	3.3
501	201	MC	3360	2	24	75	2	3
501	201	MC	4301	3	24	75	2	3
501	201	MC	1301	2	1	165	1	3.3
501	201	MC	3307	1	13	50	2	2
501	201	GER	1410	2	12345	50	5	5
501	201	MC	1301	4	24	75	2	3
501	201	MC	3375	2	135	50	3	3
501	201	MC	5302	1	2	165	1	3.3
501	201	MC	5301	1	3	165	1	3.3
501	201	MC	4320	2	13	75	2	3
501	201	MC	4320	1	24	75	2	3
501	201	MC	3367	4	24	75	2	3
501	201	MC	2374	1	24	75	2	3
Weekly Instructional Hours for Old Main 201 =								49.7
Divide by Coordinating Board standard for classrooms								/ 38
% of Coordinating Board Standard =								130.8

Formula to calculate overall university utilization:

The duration of each section (lecture/lab) listed in the CBM005 is converted to 50 minute hours (instructional hours) as explained above and the hours are added to determine the total amount of instructional hours offered for the semester.

Example: There were 11,366.1 hours listed in the fall 2005 CBM005.

The “stacked” classes (those that meet on the same day at the same time in the same room but have a different course and section number) are removed to a separate table and the instructional hours are added to determine the amount of hours for stacked classes that should be removed from the total instructional hours.

Example: There were 1247.4 instructional hours deducted as stacked hours for fall 2005.

All class sections taught in room types other than 110 and 210 are removed to a separate table and the hours are added to determine the amount of hours that should be removed from the total instructional hours.

Example: Hours taught in rooms not designated as classrooms or class labs that were deducted for fall 2005 are 1,622.2.

The remaining sections are separated into two tables, one for sections taught in designated classrooms and one for sections taught in designated class labs and the instructional hours are totaled.

Example: There were 6467.7 instructional hours offered in classrooms and 1998.8 instructional hours offered in class labs.

The total hours for classrooms are divided by the number of classrooms in the Facilities Inventory and the total hours for class labs are divided by the number of class labs in the Facilities Inventory.

Example: There are 182 classrooms in the inventory. Therefore, the overall classroom utilization would be 6467.7 divided by 182 or 35.5 (50 minute) hours per week. There are 57.45 class labs in the inventory (2 class labs in RFM are also used as research labs). Therefore, the overall class lab utilization would be 1999.8 divided by 57.45 or 34.7 (50 minute) hours per week.

To convert these numbers to "percent of CB standard," divide by 38 for classrooms or 25 for class labs.